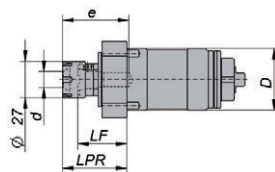


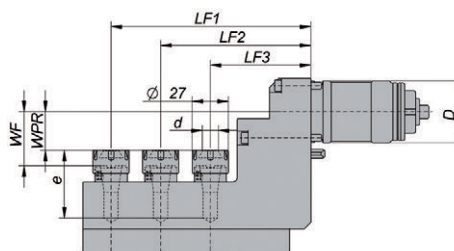
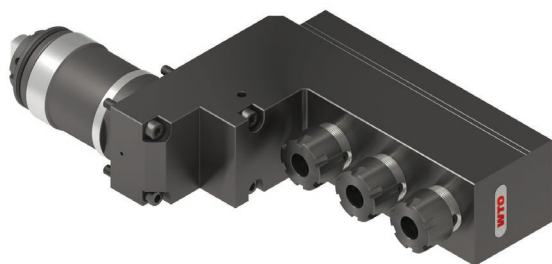
橫向鑽銑刀座



料號	機床介面		刀具介面	尺寸/參數							
	D	機床		驅動	d	LPR	LF	e	n max. [rpm]	M [Nm]	i n1:n2
NF16-DNE-TS46A-048-E-A	46	B0265-II/266-II B0325-II/326-II/385 SS20/26/32	DIN1809	ER-16NF	0.5-10	48	36.5	49.5	8000	13	1:1
NF16-DNE-TS35A-067-E-A	35	S205A/206A	DIN1809	ER-16NF	0.5-10	67.5	56	55	8000	13	1:1

尺寸 mm. 包含螺帽及止付螺絲ER-16Nf

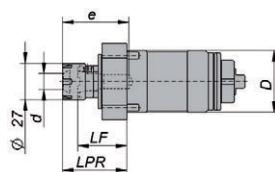
三軸鑽銑動力刀座



料號	機床介面		刀具介面	尺寸/參數										
	D	機床		驅動	d	LF1	LF2	LF3	WPR	WF	e	n max. [rpm]	M [Nm]	i n1:n2
NF16-DNI-TS46A-075-E-X3-A	46	B0265-II/266-II B0325-II/326-II/385 SS20/26/32	DIN1809	ER-16NF	0.5-10	149	112	75	28.5	40.0	50.5	8000	13	1:1
NF16-DNI-TS35A-076-E-X3-A	35	S205A/206A	DIN1809	ER-16NF	0.5-10	138.5	107.5	76.5	17.0	28.5	50.5	8000	5	1:1

尺寸 mm. 包含螺帽及止付螺絲ER-16Nf

副主軸用鑽銑動力刀座



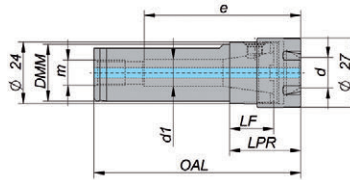
料號	機床介面		刀具介面	尺寸/參數							
	D	機床		驅動	d	LPR	LF	e	n max. [rpm]	M [Nm]	i n1:n2
NF16-DNE-TS42A-043-E-A	42	B0266-II/326-II	DIN1809	ER-16NF	0.5-10	43	31.5	58	8000	13	1:1




尺寸 mm. 包含螺帽及止付螺絲ER-16Nf

直柄轉接刀把

鎖固平面

可安裝於搪刀刀位，彈性運用ER 筒夾及nanoFlex® 快換刀把



尺寸	料號	DMM	d min.	d max.	LF	LPR	OAL	d ₁	m	e			
ER-16NF	NF16-SSH-025-A	25	0,5	10	17	28,5	78,5	10,5	G1/8"	60,5	NF16-SCN-A	107520005	NF16-SPL-A

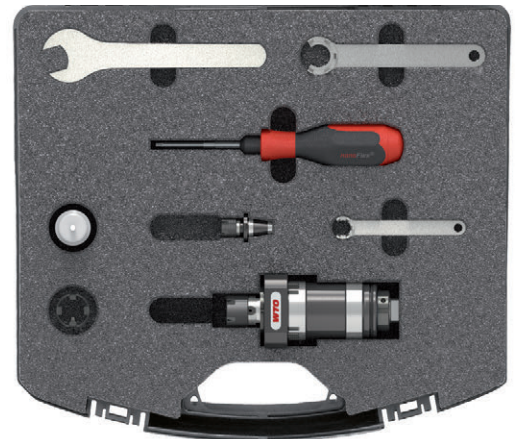
尺寸 mm. 包含螺帽及止付螺絲ER-16NF

基本刀具組合

NF16-DNE-TS46A-048-E-SK-A

包含

- 1 NF16-DNE-TS46A-048-E-A 橫向鑽銑刀座
- 1 NF16-SAD-ER11-A ER11M 筒夾刀把
- 1 NF16-SDR-A 驅動環 (含 NF16鎖固螺絲)
- 1 NF16-STW-A 扭力板手
- 1 107516002 板手 SW19
- 1 107520005 ER-16NF 板手
- 1 107511005 ER11M 板手



基本刀具組合

NF16-DNE-TS35A-067-E-SK-A

包含

- 1 NF16-DNE-TS35A-067-E-A 橫向鑽銑刀座
- 1 NF16-SAD-ER11-A ER11M 筒夾刀把
- 1 NF16-SDR-A 驅動環 (含 NF16鎖固螺絲)
- 1 NF16-STW-A 扭力板手
- 1 107516002 板手 SW19
- 1 107520005 ER-16NF 板手
- 1 107511005 ER11M 板手

